

AVAILABLE FOR LEASE

Lehi Station

2901 North Ashton BLVD | Lehi, Utah



Lehi Station is ideally located adjacent to the Lehi Station Front Runner. It is just west of I-15 and north 2100 North. Thanksgiving Pointe Golf Course is directly to the west and panoramic views of the mountains are to the east. There are roughly 40,000 SF of new retail/restaurants and multiple hotels that have been constructed off of the SR-92 Interchange.

This building is designed with, 27,500 SF floor plates, State-of-the-Art VRF mechanical system, oversized restrooms, three elevators, and a 5/1,000 parking ratio.

FEATURES

AVAILABLE SUITES

137,000 SF planned
9 acres

BUILDING

Approx. 27,400 SF floorplates

PARKING

On-grade parking at 5 stalls per 1,000 USF

PROXIMITY

Less than 35 minutes from Salt Lake
International Airport

Less than 1 mile from I-15 access

Direct Access to Frontrunner

AVAILABLE

April 1, 2016

RENTAL RATE

Call for more details

FOR MORE INFORMATION PLEASE CONTACT

John Bankhead
Project Manager
Gardner Company
801.750.4170 (mobile)
johnb@gardnercompany.net

Mark Murdock
Project Manager
Gardner Company
801.915.1822 (mobile)
mark@gardnercompany.net

GARDNER COMPANY

AVAILABLE FOR LEASE

Site Plan



FOR MORE INFORMATION PLEASE CONTACT

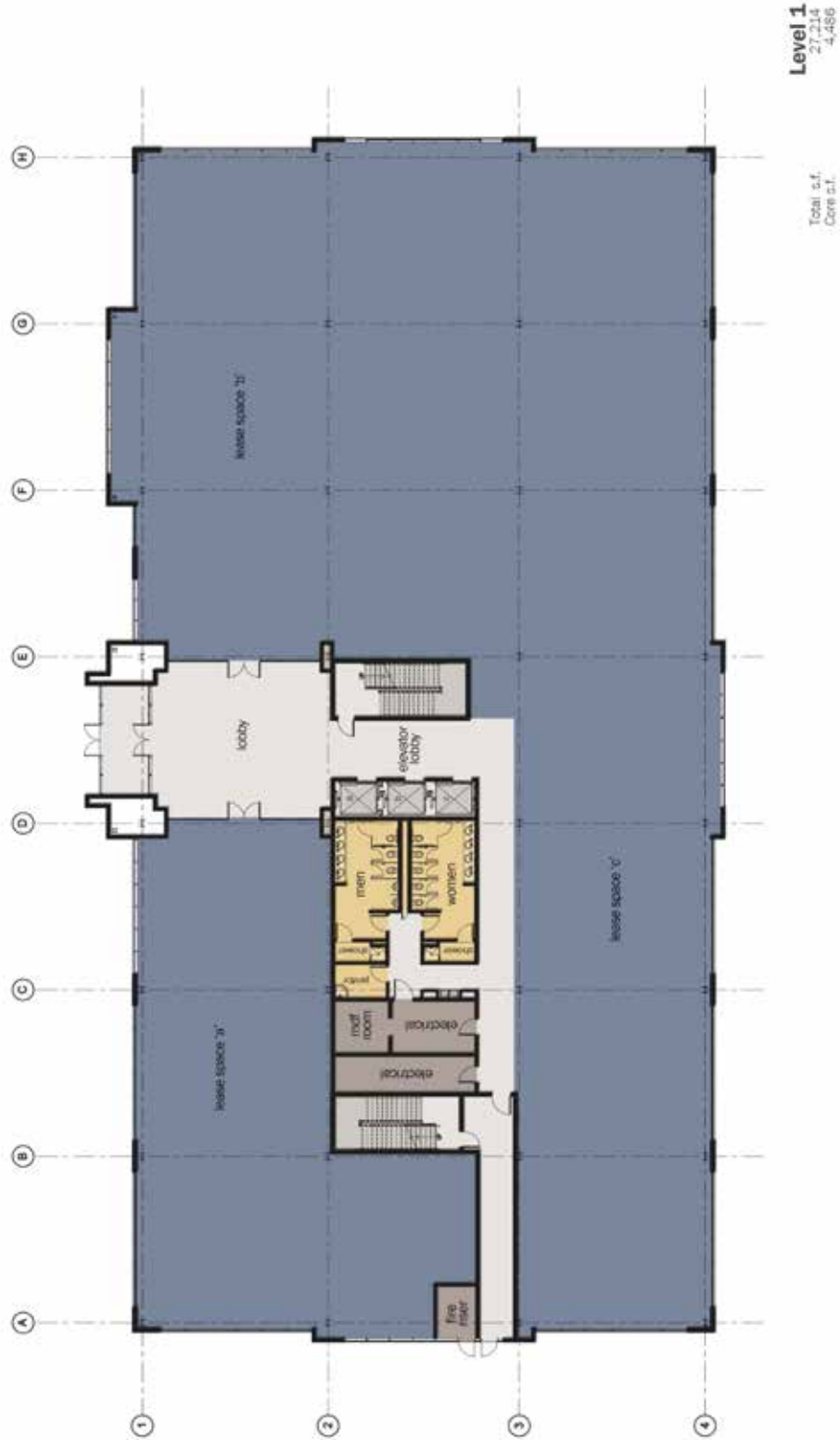
John Bankhead
Project Manager
Gardner Company
801.750.4170 (mobile)
johnb@gardnercompany.net

Mark Murdock
Project Manager
Gardner Company
801.915.1822 (mobile)
mark@gardnercompany.net

GARDNER COMPANY

AVAILABLE FOR LEASE

Floor 1



FOR MORE INFORMATION PLEASE CONTACT

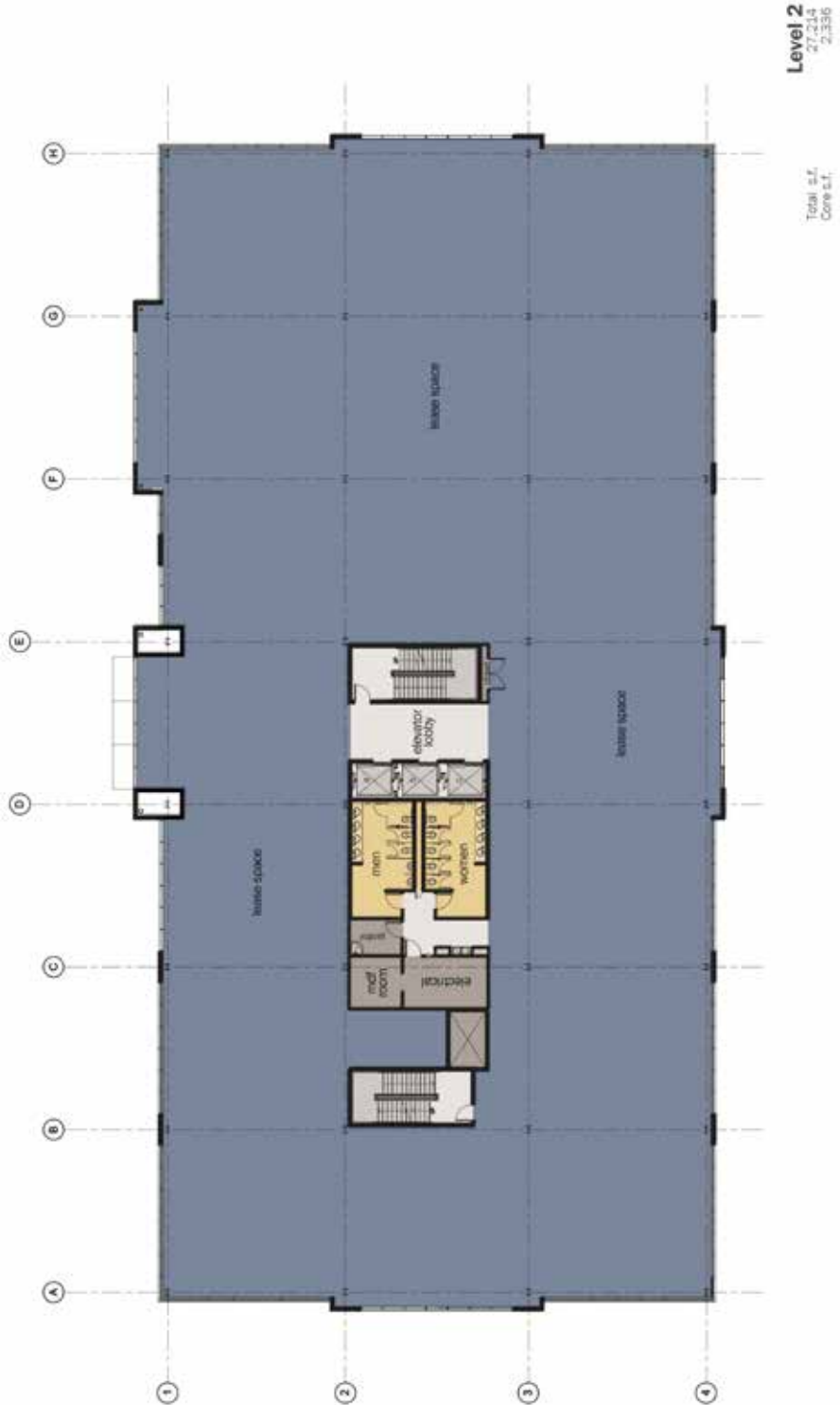
John Bankhead
Project Manager
Gardner Company
801.750.4170 (mobile)
johnb@gardnercompany.net

Mark Murdock
Project Manager
Gardner Company
801.915.1822 (mobile)
mark@gardnercompany.net

GARDNER COMPANY

AVAILABLE FOR LEASE

Floors 2 - 3



FOR MORE INFORMATION PLEASE CONTACT

John Bankhead
Project Manager
Gardner Company
801.750.4170 (mobile)
johnb@gardnercompany.net

Mark Murdock
Project Manager
Gardner Company
801.915.1822 (mobile)
mark@gardnercompany.net

GARDNER COMPANY