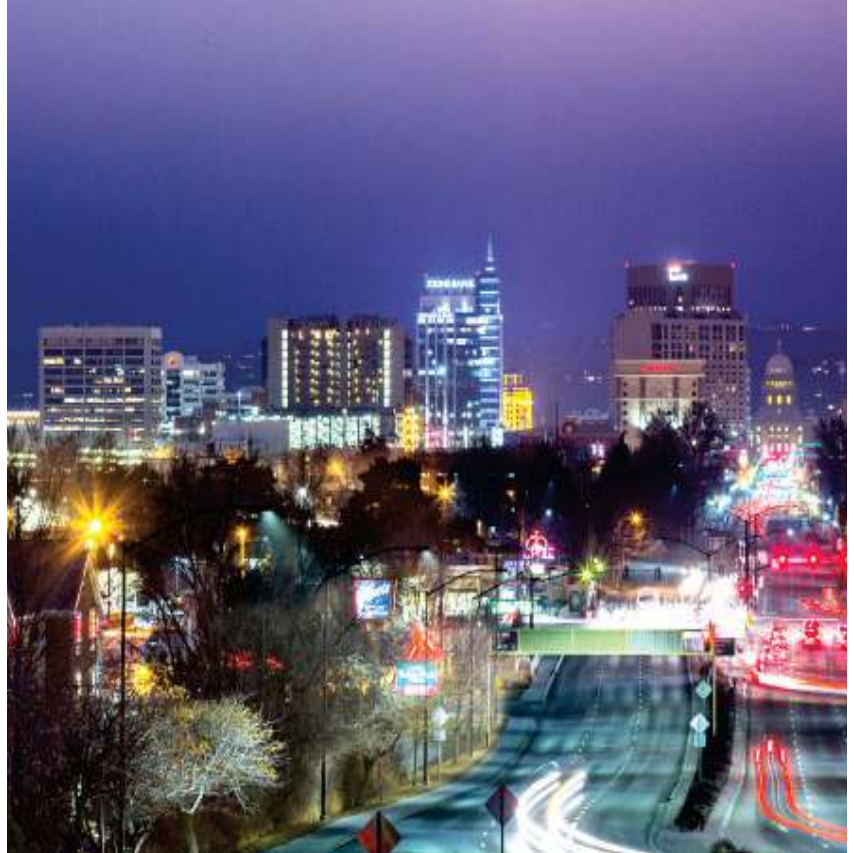




EIGHTH & MAIN



FOR LEASE • OFFICE/RETAIL/RESTAURANT

800 West Main Street • Boise, Idaho 83702

800 W. Main St., Boise, ID, 83702 • Office Space

PROPERTY PROFILE

Class 'A' office building on downtown Boise's most visible and vibrant downtown corner with over a quarter million square feet of office space.

Available Suites:

9th Floor:	2,089 SF	\$26 PSF, FS	LEASED
14th Floor:	6,429 SF	\$26 PSF, FS	

PROPERTY HIGHLIGHTS

- Multifunctional space designed with business in mind
- State-of-the-art, high performance systems resulting in reduced occupancy costs
- LEED-certified, environmentally-responsible, and sustainable with recycled or recyclable materials
- 181 exclusive parking stalls within the building
- Shower facilities on every floor

FOR MORE INFORMATION,
PLEASE CONTACT:

DAVE WALI
P: 208-246-8909
david@gardnercompany.net

MARK CLEVERLEY
P: 208-246-8909
markc@gardnercompany.net

- Restaurants, retail shops, financial services, and hotel adjacent to the building
- Immediate access to all regions of the Boise MSA via Front Street and I-184
- Major Tenants include:
 - Zions Bank
 - Holland & Hart
 - A10 Capital
 - Parsons Behle & Latimer
 - Ruth's Chris Steakhouse



E I G H T H & M A I N



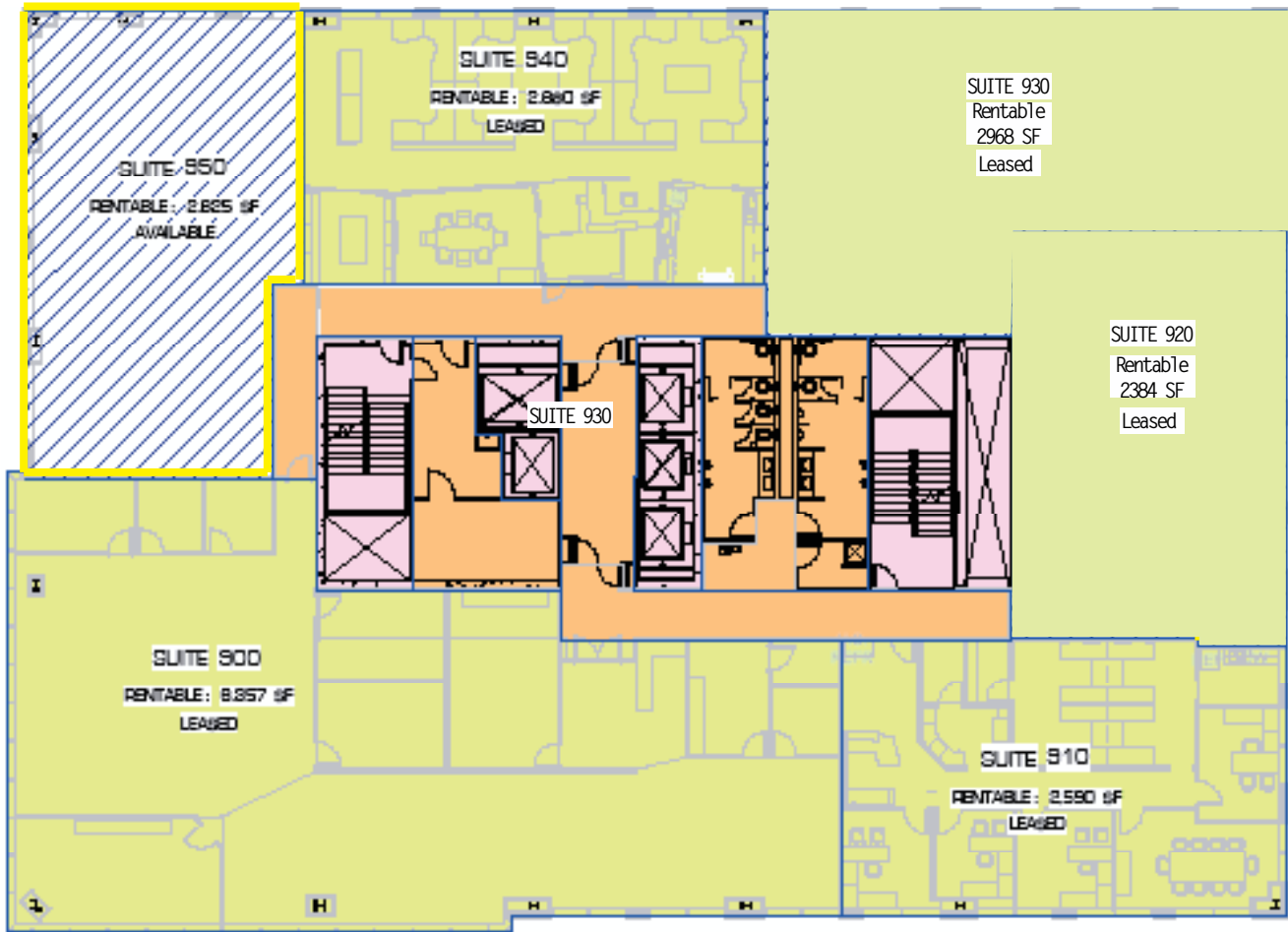
FOR MORE INFORMATION,
PLEASE CONTACT:

DAVE WALI
P: 208-246-8909
david@gardnercompany.net

MARK CLEVERLEY
P: 208-246-8909
markc@gardnercompany.net

9th Floor

E I G H T H & M A I N



KEY:

- FLOOR COMMON AREA
- OCCUPANT AREA
- MAJOR VERTICAL PENETRATIONS
- OCCUPANT AREA - AVAILABLE

LEVEL 9

BCMA STANDARD - METHOD A

FOR MORE INFORMATION,
PLEASE CONTACT:

DAVE WALI
P: 208-246-8909
david@gardnercompany.net

MARK CLEVERLEY
P: 208-246-8909
markc@gardnercompany.net

14th Floor

E I G H T H & M A I N



- KEY:
- FLOOR COMMON AREA
 - OCCUPANT AREA
 - MAJOR VERTICAL PLANT RISINGS
 - OCCUPANT AREA - AVAILABLE

LEVEL 14

BCMA STANDARD - METHOD A

FOR MORE INFORMATION,
PLEASE CONTACT:

DAVE WALI
P: 208-246-8909
david@gardnercompany.net

MARK CLEVERLEY
P: 208-246-8909
markc@gardnercompany.net